

Instructions for integrating
AC•THOR[®] or AC ELWA[®]-E
 into SMA Sunny Home Manager (SHM)



Contents

1. Default settings on AC•THOR or AC ELWA-E	1
2. Integrating device in the Sunny Home Manager (SHM).....	2
Searching for and adding AC•THOR or AC ELWA-E in the SHM	2
Configuration - Step 1	3
Configuration - Step 2	4
Configuration - Step 3	4
3. AC•THOR or AC ELWA-E with SHM and Sunny Island (SI) battery inverter	7
4. Control multiple devices with the SHM	7
5. Settings for systems with zero feed-in	8

1. Default settings on AC•THOR or AC ELWA-E

Before commissioning, it is essential that you read the assembly instructions that accompany the device, as well as the operating instructions available on line.

Select “SMA Home Manager” in the control settings on AC•THOR display or the web interface. Please refer to the AC•THOR operation manual at www.my-pv.com

Select “SMA Home Manager” in the control settings in the AC ELWA-E setup in the web interface. Please refer to the AC ELWA-E operation manual at www.my-pv.com

2. Integrating device in the Sunny Home Manager (SHM)



The SHM must already be registered in the SMA portal!

If – Configuration – Device overview is selected in the SMA portal, only the SHM will be displayed at first. AC•THOR or AC ELWA-E will not appear to start with. Once the configuration process is complete, it will appear in the lower-level menu item – Load overview and planning.

SUNNY PORTAL English ▾ SMA Online Store ▾ Dominik Main ▾

Test

- PV System Overview
- PV System Profile
- Current Status and Forecast
- Energy Balance
- Annual Comparison
- PV System Monitoring
- PV System Logbook: 0
- Analysis
- Report (2)
- Configuration
- PV System Properties
- PV System Presentation
- Device Overview
- Load Overview and Planning
- Report Configuration
- User Management
- Sunny Portal products

Device Overview Overview of New Devices

A new device has been detected in this PV system.
Set up device now >

Device Name: Serial Number: Devices: Data Collection:

Refresh Reset Update parameters

Device Name	Serial Number	Product Group	Data Collection	Monitoring	Properties	Parameters	Logbook
Home Manager 878	157004878	Sunny Home Manager					

© 2016 SMA Solar Technology AG | Home | Information | User manuals | FAQ | Terms of Use | Data protection declaration | Legal Notice

Searching for and adding AC•THOR or AC ELWA-E in the SHM

Update the list under – Configuration – Device overview – Overview of New Devices – “Refresh devices”.

This process may take several minutes.

SUNNY PORTAL English ▾ SMA Online Store ▾ Dominik Main ▾

Test

- PV System Overview
- PV System Profile
- Current Status and Forecast
- Energy Balance
- Annual Comparison
- PV System Monitoring
- PV System Logbook: 0
- Analysis
- Report (2)
- Configuration
- PV System Properties
- PV System Presentation
- Device Overview
- Load Overview and Planning
- Report Configuration
- User Management
- Sunny Portal products

Device Overview Overview of New Devices

Searching for new devices
To have new devices displayed or if recently added devices are not displayed, select "Update devices".

Loading device information. Please be patient. This procedure may take a few minutes.

© 2016 SMA Solar Technology AG | Home | Information | User manuals | FAQ | Terms of Use | Data protection declaration | Legal Notice

AC•THOR or AC ELWA-E will appear as a “Smart Appliance” together with its MAC-address - click “+” to configure.

SUNNY PORTAL English - SMA Online Store - Donnik Main

Test

Device Overview Overview of New Devices

A new device has been detected in this PV system.

With which configuration would you like to add the new device to this Sunny Portal PV system?

- As a PV System Extension (Additional Device)
 - Configuration assistant opens
 - Edit the device name
 - Adjust generator power
- As a Replacement Device
 - Configuration assistant opens
 - Before starting the configuration wizard, you must deactivate the data acceptance of the device to be replaced.
 - Select the device to be replaced
 - Transfer data to the replacement device

Important Information: Incorrect allocation of new devices may lead to faulty display.

Device	Product Group	Serial Number	Configuration
Smart Appliance	Smart Appliance	98603SC00001	+

Refresh devices

© 2016 SMA Solar Technology AG | Home | Information | User manuals | FAQ | Terms of Use | Data protection declaration | Legal Notice

Configuration - Step 1

Product type will be used automatically in combination with the last three characters of the MAC address as a device name. The MAC address can also be seen on the type plate.

SUNNY PORTAL English - SMA Online Store - Donnik Main

1 2 3

Device Name Device Characteristics Summary

Smart Appliance - PV System Extension

Enter the desired name of the device. You can also select and edit one of the suggestions.

Device Name*: AC ELWA-E 001

Insert Suggestion:

Use product name --> AC ELWA-E

Use serial number --> 98603SC00001

Product name + serial number Last 3 digits --> AC ELWA-E 001

* Required field

Back Cancel Next

© 2016 SMA Solar Technology AG | Home | Information | User manuals | FAQ | Terms of Use | Data protection declaration | Legal Notice

Configuration - Step 2


In order for AC•THOR or AC ELWA-E to simply make use of surplus energy that can no longer be used by other loads, my-PV recommends the following settings:

- Set the priority of the load to a very low
- Switch on the load depending on the proportion of PV energy
- Move the “Optimum energy demand” slide to 100% PV

SUNNY PORTAL English ▾ SMA Online Store ▾ Dominik Main ▾

1 2 3
Device Name Device Characteristics Summary

Smart Appliance - PV System Extension


Serial Number: 986035C00001

Priority of the load: very low

Optional energy demand: Load will be switched on depending on:
 Proportion of the PV energy
 Maximum permitted energy costs

External energy supply: 0 %
PV power generation: 100 %

Back Cancel Next

© 2016 SMA Solar Technology AG | Home | Information | User manuals | FAQ | Terms of Use | Data protection declaration | Legal Notice


Configuration - Step 3

These settings are displayed once more for checking.

SUNNY PORTAL English ▾ SMA Online Store ▾ Dominik Main ▾

1 2 3
Device Name Device Characteristics Summary

Smart Appliance - PV System Extension


Serial Number: 986035C00001

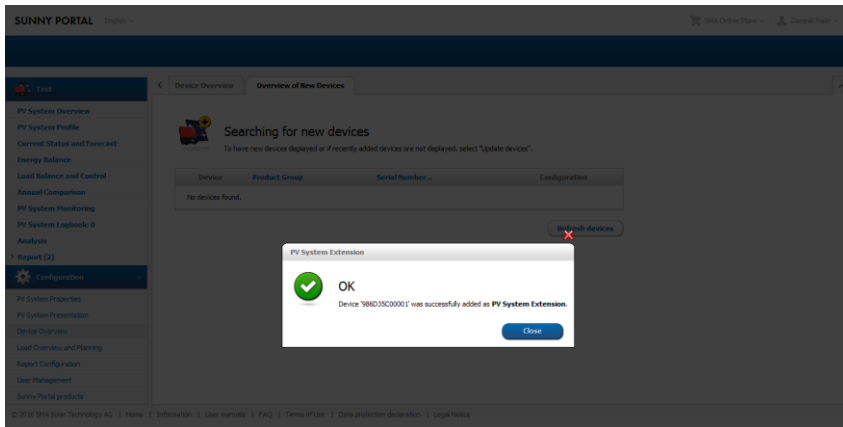
If the data is correct, select "Finish".

Device Name: AC ELWA-E 001
Priority of the load: very low
Load will be switched on depending on: Proportion of the PV energy
External energy supply: 0 %
PV power generation: 100 %

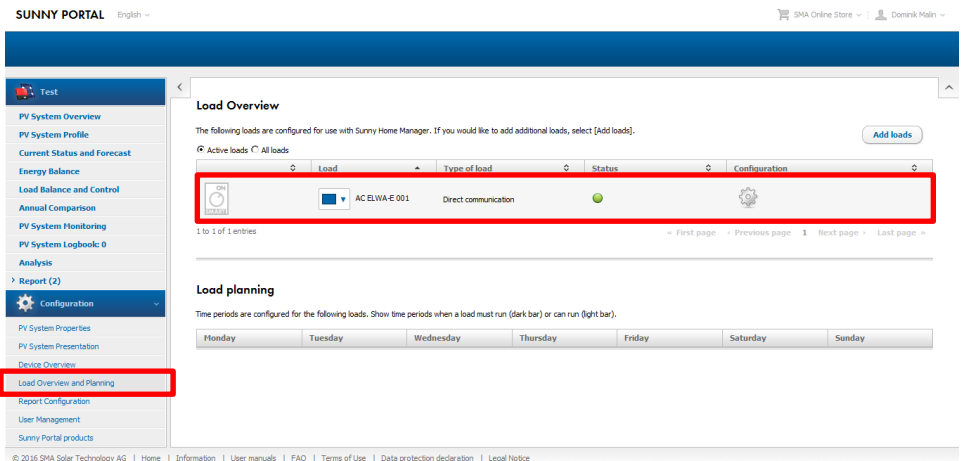
Back Cancel Finish

© 2016 SMA Solar Technology AG | Home | Information | User manuals | FAQ | Terms of Use | Data protection declaration | Legal Notice

Click the “Finish” button to complete the addition of the new system extension. This is confirmed with a message.



Once the configuration is complete, AC•THOR or AC ELWA-E will appear in the menu item – Load overview and planning.



The load characteristics of the new “Smart Appliance” can be displayed again at any time.

SUNNY PORTAL English ▾ SMA Online Store ▾ Dominik Main ▾

Test < Load Overview and Planning AC ELWA-E 001

Load characteristics

Data Collection:	<input checked="" type="checkbox"/> Active
Name of Load:	AC ELWA-E 001
Product Group:	AC ELWA-E
Serial Number:	986035C00001
Power Consumption:	3000 W ⓘ
Priority of the load:	low ⓘ <input type="range"/> high ⓘ
Optional energy demand:	Load will be switched on depending on: <input checked="" type="radio"/> Proportion of the PV energy <input type="radio"/> Maximum permitted energy costs External energy supply: 0 % PV power generation: 100 %
Load icon:	
Load color:	<input type="color"/>

Save Cancel Delete Upload load icon

© 2016 SMA Solar Technology AG | Home | Information | User manuals | FAQ | Terms of Use | Data protection declaration | Legal Notice

⚠ In the SHM AC•THOR or AC ELWA-E are not managed via time windows as is usually the case with wireless sockets for example!

⚠ Periods in which hot water securing must be boosted are specified in AC•THOR or AC ELWA-E settings directly. (see respective operating instructions on www.my-pv.com)

⚠ Bear in mind the optimization target settings within the SHM!

The factory setting of the SHM for the payment settings has an optimisation target of “economical”. In this case, my-PV recommends changing the optimisation target to “ecological”! Readjust this under – Configuration – PV system properties - Parameters.

Optimization Target

The optimization target indicates whether the Sunny Home Manager should prioritize ecological or economical factors for load management. If you select “ecological” as the optimization target, the Sunny Home Manager calculates the solution which uses the greatest self-consumption. Greater self-consumption conserves the environment because there is no energy loss caused by the transport of current through the power distribution grid. If you select the “economical” optimization target, the Sunny Home Manager calculates the most financially rewarding control of the loads, taking into consideration the feed-in and self-consumption tariffs. In certain cases, it may be more economical to feed the PV electricity into the power distribution grid and to operate the individual loads at night using electricity purchased from the grid.

Optimization Target

ecological economical

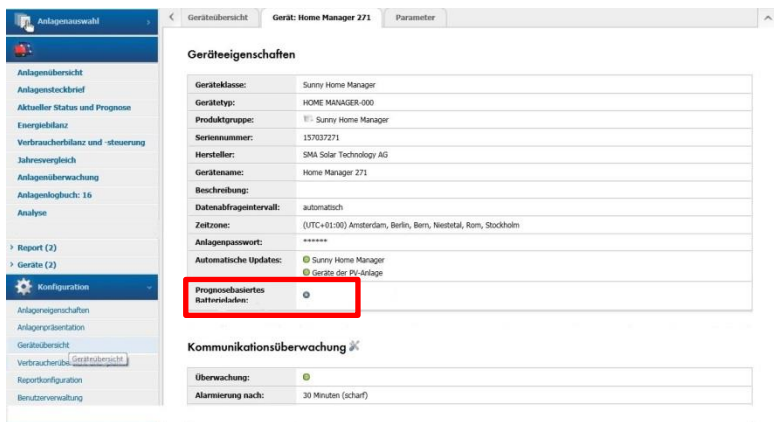
3. AC•THOR or AC ELWA-E with SHM and Sunny Island (SI) battery inverter

my-PV recommends prioritising the use of excess energy for charging the battery. Only once the battery has finished charging AC•THOR or AC ELWA-E should start generating heat. This is achieved by making the following setting:


- Deactivate forecast-dependent charging of battery

Configuration – Device overview – Sunny Home Manager properties – click on Edit – “Deactivate”


Image soon in English!



Once the battery is fully charged, AC•THOR or AC ELWA-E are only then used when no other consumer has a higher priority!

 If the excess PV power is greater than the maximum charging capacity of the battery, generation of heat can simultaneously happen with battery charge!

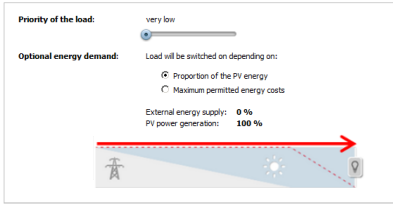
4. Control multiple devices with the SHM

 The adaptation of the internal multi-settings for the operation of several devices is **not required** when controlled by the SMA SHM!

Since the SHM actively controls loads like AC•THOR or AC ELWA-E, it is not necessary to configure one device as master and the others as slaves. All devices continue to have the factory pre-set device number 1.

5. Settings for systems with zero feed-in

For systems with zero export to the power-grid the settings have to be made as follows.



my-PV GmbH
Teichstrasse 43, 4523 Neuzeug
www.my-pv.com

Subject to change.

MYPV